



Education Bureau

Non-Chinese Speaking Parent Information Package Your Guide to Education in Hong Kong

Punjabi (Indian) and English Version

Help You Grasp the Information
on Hong Kong Education



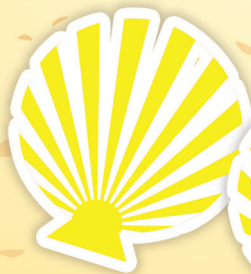


Education Bureau

Non-Chinese Speaking Parent Information Package Your Guide to Education in Hong Kong

Punjabi (Indian) and English Version

Help You Grasp the Information
on Hong Kong Education



Contents

Preface	3
Hong Kong's Education Highlights	4-7
Admission	
Kindergarten	8-9
Primary One	10-11
Secondary One	12-13
Other primary and secondary school levels	14-15
Adaptation programmes for newly arrived non-Chinese speaking children	16-17
Finding a Suitable School Place	
Learning in Local Kindergartens	18
Education Services for Children with Special Educational Needs	19-21
Enrolling in local ordinary schools	
- Learning in local ordinary schools: Summer Bridging Programme and other school-based support programmes	22
- Pleasurable and Effective Chinese Learning	23-27
- Caring school environment	28-30
- Education services for students with learning difficulties	31
Joining Parent-Teacher Association — Walking with Your Children	32-33
Further and Other Study Opportunities	
Further Study Opportunities for Secondary School Leavers	34-36
Higher and Post-secondary Education	37
Vocational Education and Other Study Opportunities	38-39
New Initiatives	
New Academic Structure	40-41
Senior Secondary Applied Learning	42
Information Dissemination	
Finding School Information	43-44
Webpage for "Education services for non-Chinese speaking (NCS) students"	45-46
Summary of Enquiry Numbers	47-49

Preface

With this Guidebook, the Education Bureau (EDB) aims to introduce to non-Chinese speaking (NCS) parents school education in Hong Kong (kindergartens, primary and secondary schools), important education policies, as well as the related education services. It will help you grasp the basic information and also provide you with access to further information which enables you to make appropriate decisions when selecting schools and related education services for your children.





Hong Kong's Education Highlights

School Education



School education in Hong Kong is divided into kindergarten, primary and secondary education. Kindergarten education institutions are privately run and cater for children aged three to six. Some kindergartens have affiliated child care centres (i.e. kindergarten-cum-child care centres) to provide child care services for children aged below three.

Primary education normally starts at the age of six (the minimum admission age is five years and eight months). All eligible children are, on application, allocated Primary 1 places in government or aided primary schools through the "Primary One Admission System". Free primary education is available in all government and aided primary schools.

After completing primary education, students will be allocated subsidised Secondary 1 places through participation in the "Secondary School Places Allocation System". They will proceed to receive six years of free secondary education.

With effect from the 2008/09 school year, the Government provides full subvention for full-time courses run by the Vocational Training Council for Secondary 3 leavers to offer an alternative free avenue for senior secondary students outside mainstream education.



New Academic Structure

To meet the needs of the 21st Century, the New Academic Structure (NAS) has been implemented at Secondary 4 since September 2009, under which all students have the opportunity to receive three years of junior secondary and three years of senior secondary education.

Under the NAS, senior secondary students are required to take 4 core subjects, i.e. Chinese Language, English Language, Mathematics and Liberal Studies. In addition, they can choose 2 or 3 subjects from 20 New Senior Secondary (NSS) elective subjects, a range of Applied Learning subjects or 6 other language subjects according to their interests. Apart from core subjects and elective subjects, students are required to acquire Other Learning Experiences, including Moral and Civic Education, Community Service, Career-related Experiences, Aesthetic Development and Physical Development, for facilitating their whole-person development.

Upon completion of the three-year senior secondary education, students will sit for the Hong Kong Diploma of Secondary Education (HKDSE) Examination and choose different pathways in the light of their interests and abilities to fully stretch their potentials.



Hong Kong's Education Highlights

Types of School

At present, all curricula offered in Hong Kong's primary and secondary schools are prepared by the Curriculum Development Council (CDC) (an advisory body established by the Government) and recommended for use in schools by EDB. Primary and secondary schools offering curricula prepared by the CDC can be divided into four main types:

- Government schools which are operated by EDB;
- Aided schools which are subvented by EDB but run by school sponsoring bodies;
- Direct Subsidy Scheme schools which have greater flexibility in curriculum design and charging of tuition fees; and
- Some private schools.

International schools, and some of the Direct Subsidy Scheme schools and private schools provide students with other curricula.

International schools provide non-local curricula, mainly for children of expatriates residing in Hong Kong and returnees' children. Students of international schools do not sit for local public examinations. At present, there are 48 international schools and 1 international special school (including 15 schools operated by the English Schools Foundation) providing a wide range of curricula including the American, Australian, British, Canadian, French, German, Japanese, Korean, Singaporean and the International Baccalaureate programme. Different mediums of instruction are used to cope with the curricula offered, including English, French, German, Korean and Japanese.

Universal Basic Education

EDB provides nine-year free universal basic education to children aged between 6 and 15. Parents have the prime responsibility to ensure that their children of the above age range attend schools regularly.

Starting from the 2008/09 school year, the Government has extended free education to





Hong Kong's Education Highlights

include senior secondary education provided by public sector secondary schools.

Section 74, Education Ordinance, Cap. 279 empowers the Permanent Secretary for Education to issue attendance orders to parents who fail to send their children to school without reasonable excuses. Section 78 stipulates that any parent who without reasonable excuse fails to comply with an attendance order shall be guilty of an offence and liable to a fine at level 3 and to imprisonment for 3 months on conviction.

Medium of Instruction



In Hong Kong, English language is taught as a major subject in both primary and secondary schools. Most government and aided primary schools adopt mother tongue as the medium of instruction (MOI) in the teaching of subjects other than the subject of English Language. Whereas in secondary schools, under the fine-tuned MOI arrangements implemented from Secondary 1 since the

2010/11 school year, schools are allowed the flexibility to adopt school-based MOI arrangements with regard to their individual school circumstances. Secondary schools' MOI arrangements have become diversified with appropriate teaching strategies devised to address students' learning needs.

Gifted Education

The mission of gifted education by EDB is to provide support to schools, so that schools can fully explore and develop the potential of gifted students systematically and strategically by providing them with appropriate education opportunities. A three-tier operation mode is adopted in implementing gifted education in Hong Kong, including whole-class (school-based), pull-out (school-based) and off-site support. These supports enable students to fully develop their potential in a flexible teaching and learning environment.

There are three types of gifted education programmes: extension (more depth), enrichment (more breadth), and acceleration (faster pace). These programmes encompass the enhancement of the generic skills (general enrichment) and catering for the learning needs in specific Key Learning Areas/domains (subject/domain focused). The content can be extended or compacted and tailor-made according to the abilities, characteristics and needs of the gifted students.





Hong Kong's Education Highlights

Special Education



There are currently 60 aided special schools in Hong Kong which are subvented by EDB and operated by school sponsoring bodies. They provide places for children with visual impairment, hearing impairment, physical disability, intellectual disability, or severe emotional and behavioural difficulties, and children hospitalised for a period of time.

Meanwhile, EDB implements integrated education by providing additional resources, teacher training and professional support to ordinary schools to help them cater for students with special educational needs. Schools are encouraged to adopt the Whole School Approach to cater for the students' needs.

Higher and post-secondary education

After completing the new senior secondary curriculum, eligible students may further pursue post-secondary programmes at bachelor degree and sub-degree level offered by publicly-funded and self-financing post-secondary institutions. Details are available at the Joint University Programmes Admissions System website (<http://www.jupas.edu.hk>) and Information Portal for Accredited Post-secondary Programmes (<http://www.ipass.gov.hk>).



Vocational education and other study opportunities

After completing the new senior secondary curriculum, students may choose to study the "Higher Diploma", "Foundation Diploma" (Level 3), or "Diploma in Vocational Education" programmes provided by the member institutions of the Vocational Training Council (VTC), namely the Hong Kong Institute of Vocational Education, the Hong Kong Design Institute and the Youth College. They may also study the industry-specific vocational education and training courses provided by the Hospitality Industry Training and Development Centre, the Chinese Cuisine Training Institute, the Maritime Services Training Institute and Pro-Act Training and Development Centres of VTC.

Other study opportunities "Ethnic Minority Project" run by VTC and "Youth Pre-employment Training Programme" and "Youth Work Experience and Training Scheme" run by the Labour Department, etc.





Admission to Kindergarten

Overview on Kindergarten Education



In Hong Kong, children between the age of three and six could receive kindergarten education in kindergartens.

The goals of kindergarten education are to nurture children to attain whole-person development, and to stimulate their interest in learning and cultivate in them positive learning attitude, so as to lay the foundation for their future learning.

Some kindergartens operate with an attached child care centre to provide caring services for children aged below three as well.

At present, there are about 1,030 kindergartens and kindergarten-cum-child care centres in Hong Kong, which are privately run and categorised into non-profit-making and private independent.

Kindergartens can operate local and non-local curricula. Half-day and whole-day services are available for the choice of parents. Information of individual kindergartens is available in the Profile of Kindergartens and Kindergarten-cum-Child Care Centres
(Website: www.chsc.hk/kindergarten)

Parents should seek admission to kindergartens by themselves. Details are available at EDB Homepage at:

www.edb.gov.hk/k1-admission_e

Kindergartens will provide both Chinese and English versions of application form, information on the application arrangements and admission criteria, etc. put in place an effective means of communication and offer assistance to students/parents as far as possible.

Under special circumstances, if kindergartens joining the kindergarten education scheme still have vacancies and individual students (such as students at risk of developmental delay) encounter difficulties in applying for admission, Regional Education Offices and Joint Office for Kindergartens and Child Care Centres of EDB will make referrals as appropriate.



Kindergarten Education Scheme (Scheme)

The new kindergarten education policy has been implemented starting from the 2017/18 school year. Under the new policy, subsidy is directly provided to kindergartens joining the Scheme.

The policy objectives are to provide good quality and highly affordable kindergarten education, and enhance the accessibility of students to different modes of services that suit their specific needs.



Admission to Kindergarten

Non-profit-making kindergartens offering a full local curriculum may apply to join the Scheme.

The basic tenet of the new policy is that Government subsidy would be sufficient for kindergartens to provide quality half-day services according to the standards prescribed by the EDB. To unleash the potential of the local labour force under the population policy, we provide an additional subsidy for whole-day and long whole-day services on a co-payment basis with parents.

The requirement in overall teacher-pupil ratio for kindergartens joining the Scheme is raised from 1:15 to 1:11.

Needy parents may apply for fee remission and grant for school-related expenses to defray school-related expenses incurred from the students' kindergarten education. Details are available at Student Finance Office Homepage at: www.wfsfaa.gov.hk/sfo/en/preprimary/



Profile of Kindergartens and Kindergarten-cum-Child Care Centres (KG Profile)

(Website: www.chsc.hk/kindergarten)

EDB publishes the bilingual (Chinese and English) KG Profile on the web every year to provide basic information on all kindergartens and help parents make informed

school choices for their children. It contains information such as the list of kindergartens joining the Scheme, the approved school fees, the number and overall professional qualifications of the principal and teaching staff, enrolment, teacher-to-pupil ratio, curriculum details, etc.

Starting from 2018, a new column "Support to non-Chinese speaking Students" has been included in the KG Profile for kindergartens to give an overview of their support.

Printed copies are available for parents' reference at EDB's Regional Education Offices, Home Affairs Enquiry Centres of the Home Affairs Department (HAD), Maternal and Child Health Centres of the Department of Health, Integrated Family Service Centres of the Social Welfare Department, public libraries and Support Service Centres for Ethnic Minorities funded by the HAD.

For enquiries on kindergarten education, parents can contact the Joint Office for Kindergartens and Child Care Centres or the respective School Development Sections of EDB, the telephone list of which is available on page 14.





Primary One Admission

Intend to study Primary One in a government or an aided school next September

Admission arrangements under the Primary One Admission System: For admission to Primary One in next school year commencing in September

Participate in Primary One Admission System

To be eligible for participation, the child must

- reach the age of 5 years 8 months when he/she is enrolled in Primary One in September
- be a Hong Kong resident
- not be attending any primary schools; and
- have never been allocated a Primary One place

Obtain an Application Form from the kindergarten or kindergarten-cum-child care centre the child is attending, District Offices (Public Enquiry Service Centres) of Home Affairs Department, the School Places Allocation Section or Regional Education Offices of EDB

Do not wish to apply for a Discretionary Place or have missed the deadline for such application

Wishing to apply for a Discretionary Place

Submit the Application Form to the School Places Allocation Section of EDB

Address : Office 2, 2/F, Manulife Financial Centre, 223 Wai Yip Street, Kwun Tong, Kowloon

Apply for a Discretionary Place

- Submit the Application Form, usually in late September or early October, to the school direct
- Submit the Application Form to **ONE** primary school only (the application is not subject to restrictions on school nets; parents may choose schools provided with school-based support programmes specifically arranged for non-Chinese speaking students or other schools)
- All applicants with sibling(s) studying or parent(s) working in the school applied for will be admitted. Other applicants will be selected according to the Points System

Participate in the "Central Allocation" Stage

The results of discretionary places admission are usually announced in November each year

Unsuccessful applicants to participate in the "Central Allocation" Stage

Successful applicants to register with the school

Parents to make choices of schools on specified dates next January

- 10% of individual school's Primary One places earmarked for central allocation are for the unrestricted school choices. Parents may choose up to 3 schools in any school nets
- The remaining 90% are for restricted school choices. Parents should select the primary schools available in their school net. If parents have indicated on the Application Form that their child cannot use Chinese as the learning medium, they can also choose schools provided with school-based support programme specifically arranged for non-Chinese speaking students in any school nets

• The Central Allocation results are usually released in early June each year

• Parents should go to the specified Central Allocation Centre on the specified dates to collect the "Primary One Registration Form" and register the child with the allocated school on the specified dates



Primary One Admission



Other Arrangements for Primary One Admission

For parents who have not applied in time to participate in the Discretionary Places Admission or Central Allocation stage, but wish their child to study Primary One in the new school year (usually starting on September 1), they should bring along their child's identity documents and proof of residential address **(both originals and photocopies)** to make application for arranging a Primary One place at the School Places Allocation Section of EDB.

For children seeking admission to Primary One after the school year has begun (i.e. on or after September 1), parents should bring along their child to the nearest Regional Education Office for placement assistance with the following documents **(both originals and photocopies)**:

- the child's identity documents; and
- proof of residential address.

For the addresses and telephone numbers of the Regional Education Offices, please refer to page 14.

Direct Subsidy Scheme primary schools, private primary schools and primary schools of the English Schools Foundation are excluded from the Primary One Admission System. These schools have their own criteria, timetables and administrative arrangements for admission. Parents who wish to send their children to these schools should approach the schools direct for information and application.



Enquiry

Parents seeking further information may contact the School Places Allocation Section of EDB.

Address: Office 2, 2/F, Manulife Financial Centre,
223 Wai Yip Street, Kwun Tong,
Kowloon

Telephone No. : 2832 7700 / 2832 7740

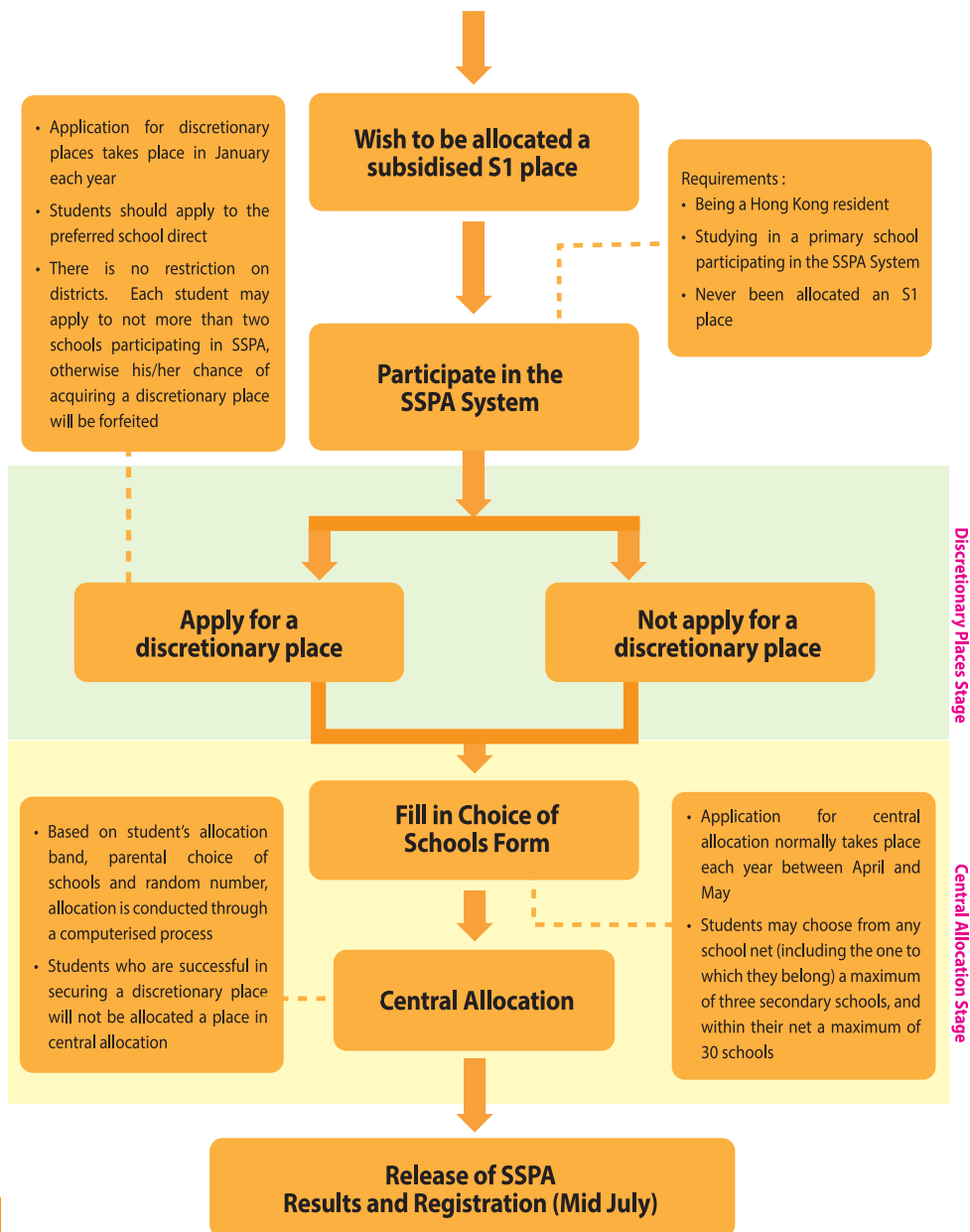
Website: <http://www.edb.gov.hk/en/edu-system/primary-secondary/spa-systems/primary-1-admission/index.html>



Secondary One Admission

Arrangements under the Secondary School Places Allocation (SSPA) System

Admission to Secondary One (S1) in September of next school year





Secondary One Admission

Enquiry

Parents seeking further information on SSPA may contact the School Places Allocation Section of EDB.

Address : Office 2, 2/F, Manulife Financial Centre,
223 Wai Yip Street, Kwun Tong,
Kowloon

Telephone No. : 2832 7740 / 2832 7700

Website : <http://www.edb.gov.hk/en/edu-system/primary-secondary/spa-sytems/secondary-spa/general-info/index.html>



Other Arrangements for Secondary One Admission

For students who are not studying in a primary school participating in the SSPA System, if they wish to be admitted to Secondary One in the new school year (usually starting on September 1), irrespective of whether they have applied for a discretionary place, they can register with the School Places Allocation Section of EDB from May to August, bringing along the originals of their identity documents, for allocation of a subsidised Secondary One place.

For children seeking admission to Secondary One after the school year has begun (i.e. on or after September 1), they should approach the nearest Regional Education Office for placement assistance with the following documents **(both originals and photocopies)**:

- identity documents;
- proof of attained academic qualifications; and
- proof of residential address.

For the addresses and telephone numbers of the Regional Education Offices, please refer to page 14.

Apart from government or aided schools, students may choose to study in private schools, international schools or Direct Subsidy Scheme schools not participating in the SSPA system. These schools have their own criteria, timetables and administrative arrangements for admission. Parents wishing to enroll their children in these schools should approach the schools direct for information and application.





Admission to other primary and secondary levels

Government, Aided and Caput School Places



EDB is committed to providing nine-year free universal basic education for all eligible local children, including NCS children. Under the existing policy, all parents must send their children (aged 6-15) who have the right of abode in Hong Kong to attend schools.

Parents can approach schools direct for admission or they can bring along their children to the nearest Regional Education Office for placement assistance with the following documents (**both originals and photocopies**):

- identity documents and proof of attained academic qualifications of the children; and
- proof of residential address.

In case of enquiries, please contact our Regional Education Offices at the following addresses and telephone numbers:

Hong Kong Regional Education Office **2863 4646**

3/F, Cityplaza 3, 14 Taikoo, Wan Road, Hong Kong

Central & Western District School Development Section **2863 4678**

Hong Kong East District School Development Section **2863 4649**

Islands District School Development Section **2863 4634**

Southern District School Development Section **2863 4664**

Wan Chai District School Development Section **2863 4626**

Kowloon Regional Education Office **3698 4108**

Podium-1/F, East Block, EDB Kowloon Tong Education Services Centre, 19 Suffolk Road, Kowloon Tong, Kowloon

Kowloon City District School Development Section **3698 4141**

Kwun Tong District School Development Section **3698 4178**

Sai Kung District School Development Section **3698 4206**

Sham Shui Po District School Development Section **3698 4196**

Wong Tai Sin District School Development Section **3698 4219**

Yau Tsim & Mong Kok District School Development Section **3698 4163**





Admission to other primary and secondary levels

New Territories East Regional Education Office

2639 4876

*22/F, Landmark North, 39 Lung Sum Avenue,
Sheung Shui, New Territories*

North District School
Development Section 2639 4858

Sha Tin District School
Development Section 2639 4857

Tai Po District School
Development Section 2639 4856

New Territories West Regional Education Office

2437 7272

*19/F, Chinachem Tsuen Wan Plaza, 457 Castle
Peak Road, Tsuen Wan, New Territories*

Kwai Chung & Tsing Yi District
School Development Section 2437 5433

Tsuen Wan District School
Development Section 2437 5457

Tuen Mun District School
Development Section 2437 5483

Yuen Long District School
Development Section 2437 7217

Other Schools' Places

Private schools, Direct Subsidy Scheme schools, and international schools have their own criteria, timetables and administrative arrangements for admission. Parents can approach schools direct for information and admission.





Adaptation programmes for newly arrived non-Chinese speaking children

To help the newly arrived NCS children cope with adjustment problems and learning difficulties which may come up when they newly join the local education system and try to integrate into the community, EDB offers them the Initiation Programme and Induction Programme. The Initiation Programme is a full-time integrated programme provided for the newly arrived children prior to their entry to local ordinary schools while the Induction Programme is offered to the newly arrived children when they are being admitted to local ordinary schools. Details of the programmes are as follows:

Programme Name and Contents	Programme Schedule	Target	
Initiation Programme (the contents of which include various modules, like English language, Chinese language, learning skills, personal development, social adaptation, physical and cultural education. Schools can combine different modules flexibly)	Six-month programme, commencing in September and March each year; whole-day operation	<u>Newly arrived NCS children</u> aged 6 to 18, who have come to Hong Kong for less than one year or have studied in local schools in Hong Kong for less than one year	
Induction Programme (the contents of which include personal development, social adaptation and basic learning skills, e.g. learning traditional Chinese characters / Cantonese and basic Chinese / basic English and classroom English)	60-hour programme, operated during daytime or evenings of weekdays, weekends or holidays	<u>Returnee children</u> aged 6 to 18, who have returned to Hong Kong for less than one year, and have not studied in Hong Kong in the past three years	



Adaptation programmes for newly arrived non-Chinese speaking children



Organisation	Address	Level	Enquiry	Fee	Number of students in each class
Po Leung Kuk Madam Chan Wai Chow Memorial School	22 Sheung Heung Road, Tokwawan, Kowloon	Primary	2377 9951	Free	About 20
Delia English Primary School & Kindergarten	84-86 Broadway, Mei Foo Sun Chuen, Kowloon	Primary	2741 6915		
Delia Memorial School (Hip Wo)	221 Hip Wo Street, Kwun Tong, Kowloon	Secondary	2342 3175		
Note: The number of schools (commissioned by EDB to run this programme) may vary. Please refer to the EDB website on Education services for non-Chinese speaking (NCS) students, at http://www.edb.gov.hk/ncs [-> Useful school lists], for the latest information.					
The programmes are operated by non-government organisations in various districts. Please refer to the EDB webpage on Education services for non-Chinese speaking (NCS) students, at http://www.edb.gov.hk/ncs [-> Useful school lists], for the latest information.				Free	10-15



Learning in Local Kindergartens



The aim of kindergarten education in Hong Kong is to provide children with a relaxing and pleasurable learning environment to promote a balanced development in the domains of ethics, intellect, physique, social skills and aesthetics.

● Parents could consider the following points when selecting a kindergarten for their children:

- whether half-day or whole-day education services suit their needs;
- whether the service duration of the kindergarten can meet their requirements, e.g. number of leave days per year and school hours per day;
- mission of the kindergarten;
- curriculum and mode of study;
- teachers' qualifications;

- school environment and facilities;
- school fees and charges ; and
- traveling time to and from the kindergarten.

● Since children are able to adapt to the environment quickly, NCS parents are encouraged to send their children to kindergartens offering a local curriculum to enable them to learn the Chinese language as early as possible. This will definitely help them integrate into the local community and master the Chinese language. This will also facilitate their integration into the school life at local primary schools in future.

● For enquiries on kindergarten education, parents can contact the Joint Office for Kindergartens and Child Care Centres or the respective School Development Sections of EDB, the telephone list of which is available on page 14.



Related Websites

Kindergarten Education in Hong Kong:

<http://www.edb.gov.hk/en/edu-system/preprimary-kindergarten/overview/index.html>

Profile of Kindergartens and Kindergarten-cum-Child Care Centres:

www.chsc.hk/kindergarten/

Education services for non-Chinese speaking (NCS) students:

www.edb.gov.hk/ncs



Education Services for Children with Special Educational Needs

Present Policy

Children are considered to have special educational needs (SEN) if they have learning difficulties in one way or another that call for the need to receive special education services. They are provided with appropriate education to help them develop their potential to the full, achieve as much independence as they are capable of, and become well-adjusted individuals in the community.

Students with severe SEN or multiple disabilities are referred to special schools for intensive support services subject to the assessment and recommendation of specialists and with parents' consent. Other students with SEN are placed in ordinary schools.

If students encounter learning, emotional and behavioural difficulties, parents may approach student guidance personnel in primary schools or school social workers or guidance teachers in secondary schools. When necessary, they will refer the students to educational psychologists or other specialists for further assessment and consultation.



Support in Ordinary Schools

Schools in Hong Kong adopt a Whole School Approach and provide diversified support services to cater for the learning needs of students with specific learning difficulties, intellectual disability, autism spectrum disorders, attention deficit / hyperactivity disorders, physical disability, visual impairment, hearing impairment and speech and language impairment.





Education Services for Children with Special Educational Needs

Services offered by Special Schools

There are currently 60 special schools providing places for students with visual impairment, hearing impairment, physical disability, intellectual disability, or severe emotional and behavioural difficulties, and for students hospitalised for a period of time. These special schools are subvented by EDB and operated by school sponsoring bodies. Placement of students in special schools is arranged by EDB according to their individual needs.



Support Services offered by EDB

Besides conducting a territory-wide early identification and intervention of learning difficulties programme for Primary 1 students, EDB provides assessment and support services for students of government and aided schools (including caput schools) who are suspected of having sensory disabilities, speech and language impairments, severe learning or emotional /

behavioural difficulties. The assessment services may include psychological, social and educational assessment, audiological assessment¹, and speech and language assessment².

Other support services provided by EDB include school-based speech therapy support service for students with speech and language impairments, audiological services for children with hearing impairment, guidance service for students with learning or behavioural problems, and advice to parents on placement of students with SEN and on relevant support strategies.

Besides, EDB has compiled guidelines and resource packages for teachers to support education of students with SEN. A variety of leaflets have also been produced for parents and the general public to facilitate their understanding of SEN. The Special Education Resource Centre located at EDB Kowloon Tong Education Services Centre provides a digital platform for teachers, parents and the general public to share information and resources on special education.

¹ Parents who have doubt about their children's hearing are advised to seek medical consultation as soon as possible. When necessary, students with persistent hearing impairment will be referred by the schools or medical practitioners to the Speech and Hearing Services Section for further assessment and follow-up services.

² Parents of students studying in government and aided schools (including caput schools) should approach their children's schools for arrangement of speech therapy service.



Education Services for Children with Special Educational Needs

Identification, Assessment and Placement of Students with SEN

Children from birth to 12 years old with developmental problems may receive assessment for diagnosis, functional evaluation, rehabilitation prescription, short-term training and referral for educational service provided by the Child Assessment Service of the Department of Health. Telephone list is found on page 48 for reference. Parents will be briefed on their children's SEN to facilitate their informed decision on school placement.

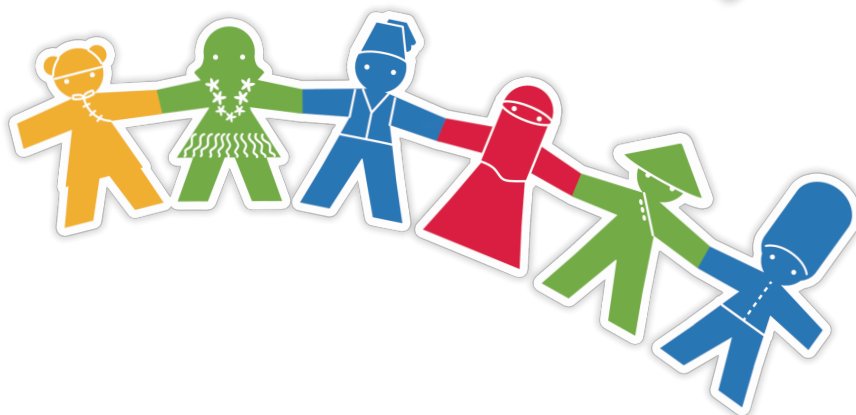
The children assessed may apply for ordinary schools or, upon parents' written consent, may be placed in special schools, and the assessment results will be forwarded to the schools concerned. Parents are encouraged to inform schools of their children's SEN.

Enquiry

Parents seeking further information may contact the Special Education Services General Office of EDB.

Telephone No. : 3698 3957

Website: <http://www.edb.gov.hk/en/edu-system/special/overview/factsheet/special-edu/index.html>





Enrolling in local ordinary schools

Learning in local ordinary schools:

Summer Bridging Programme and other school-based support programmes

To enable Primary 1 NCS students integrate smoothly into local primary schooling, the following programme is offered to them during the summer vacation prior to their entry to the local ordinary schools.

Programme Name and Contents	Summer Bridging Programme for NCS Students (the contents of which include speaking and listening of Cantonese, learning to write and read Chinese in order to meet the imminent needs in their daily life and inspire them to love learning Chinese language)
Programme Schedule	60-hour programme, lasting for about four weeks during the summer vacation
Target	Primary 1 NCS students admitted through the Primary One Admission System each September; this Bridging Programme was extended to cover also NCS students proceeding to Primary 2, Primary 3 and Primary 4 from the summer of 2007 onwards.
Organisation and Programme Venue	Organisation : Schools which EDB invites to operate the programme Programme Venue: Invited schools will inform the parents of the venue for the programme and other details
Number of students in each class	About 15
Fee	Free
Enquiry	2892 6190

Other School-based Support Programmes

In addition to the above programme, schools will take into account the background of the NCS children (such as whether they are newly arrived or disadvantaged children) and their ability (such as not knowing any Chinese or knowing a little Chinese, or other learning needs) and flexibly deploy various funds provided by EDB, e.g. the “Capacity Enhancement Grant”, “School-based After-school Learning and Support Programmes” and “School-based Support Scheme Grant” for schools with intake of newly arrived children, etc. to provide NCS children with various types of after-school or extra-curricular school-based support programmes, such as, after-school Chinese Language tutorial classes, homework tutorial classes and community visits. All these help NCS children overcome their adjustment problems and learning difficulties quicker and integrate into the local school life and society earlier.



Enrolling in local ordinary schools

Pleasurable and Effective Chinese Learning

Overcoming difficulties in Chinese language learning



Among NCS students in local ordinary schools, some are able to read and write simple Chinese as they have learnt Chinese in kindergarten, while others may have difficulties in reading, writing, listening and speaking Chinese as they are new arrivals. Great learning differences are the results of diverse starting points in learning.

EDB is very concerned about the problems faced by these students. Apart from developing a Supplementary Guide to the Chinese Language Curriculum for Non-Chinese Speaking Students, various types of assistance are being offered to schools.



Curriculum Planning

- Schools adopted a progressive approach in developing their school-based curriculum (i.e. from listening and speaking, to character recognition, reading, writing and integrated skills development). There are specific learning focuses in each key stage and these focuses will be revisited and consolidated in the subsequent stages of learning.
- Some schools have adopted a “Pool together – Pull out – Pool together again” approach. NCS students are spread over various classes to give them more opportunities to communicate with the local students so as to integrate into the school life more quickly. The students will also be put into short “Pull-out Classes” especially designed for them before their regular classes periodically, say twice a week, to increase their vocabularies and enhance their reading ability.





Enrolling in local ordinary schools

Pleasurable and Effective Chinese Learning

Teaching Strategies

- Learning and writing Chinese is never easy to the NCS students. In order to overcome these difficulties, the teachers have adopted some good ways of teaching. They will teach the students patiently stroke by stroke, or splitting a Chinese character into several parts and asking them to drill on each part before putting the parts back together.
- For teaching strategies, as teachers know the active character of students, they make classroom learning very lively by organising various activities, and students learn Chinese unconsciously through songs, games and rhythms.

Using Chinese to Learn Other Subjects

- Teachers know that students can only recognise a limited number of Chinese

characters at the start, so they will try to use teaching methods which do not require the students to know a lot of Chinese characters. For example, they will use signs and figures to demonstrate the concepts of “addition” and “subtraction” in Mathematics whereas in General Studies, they only ask students to mark parts of the human body with different colours.

After-school Support

- The Chinese Language Learning Support Centre (Centre), commissioned to a tertiary institution, has provided remedial programmes after school hours or during holidays for NCS students, particularly those who have a late start in learning the Chinese Language. The Centre also assists in the development of teaching resources and organisation of professional development workshops to render support to teachers of NCS students.





Enrolling in local ordinary schools

Pleasurable and Effective Chinese Learning

Programme Name and Contents	Chinese Language Learning Support Centre Provides remedial programmes to reinforce the learning of the Chinese Language of NCS students and renders professional support to teachers
Programme Schedule	Remedial programmes provided after school hours or during holidays
Target	NCS students (particularly those who have a late start in learning the Chinese Language); application can be made through their schools
Organisation	Tertiary institution Runs the remedial programmes at different venues in the territory
Fee	Free
Enquiry	2892 6190

- Through injection into the Language Fund, EDB has piloted a 3-year project of After-school Extended Chinese Learning for Non-Chinese Speaking Students from the 2010/11 to the 2012/13 school years. Successful applicant schools are provided additional funding to put in place diversified extended Chinese learning programmes such as after-class Chinese pull-out programmes, buddy reading programmes, training of skills in learning Chinese, guided story reading, etc. for NCS students.

Diversified Resources and Support

- Many schools employ teaching assistants to help students with their studies individually or in groups after class.



Enrolling in local ordinary schools

Pleasurable and Effective Chinese Learning

- Some schools invite secondary school students as reading ambassadors to read with NCS students in school. Quite a number of schools encourage upper form students to serve as peer teachers assisting lower form students in learning and reading Chinese. Apart from offering practical help to students, more importantly this approach can bring about a harmonious and caring atmosphere in school, which makes learning more pleasant and effective.
- With a view to enhancing the effectiveness of teaching Chinese to NCS students and alleviating teachers' difficulties in this connection, EDB provides experienced experts to support schools in curriculum planning, lesson preparation and developing the most appropriate teaching materials and assessment strategies for students. Details of the support service are at the following section.
- EDB has networked schools to form a learning community, where sharing sessions are held to promote exchange among schools, so as to create and maintain an effective Chinese learning environment for NCS students and help them adapt to and integrate into the Hong Kong society more quickly. By now, more than 50 schools have joined the network.
- A webpage for "Education services for non-Chinese speaking (NCS) students" (<http://www.edb.gov.hk/ncs>) has also been developed to provide an information platform through which school administrators, teachers, parents and the public caring about the education of NCS students can obtain useful information and related resources (particularly in the

learning of Chinese) more quickly and directly.

Good mastery of Chinese through concerted efforts

Hong Kong is primarily a Chinese society which provides a rich environment for Chinese learning. In fact, it is advantageous for NCS students to study in local schools for greater exposure to the Chinese Language. In order to help NCS student learn Chinese, great efforts have been made in many aspects.

Learning Chinese requires persistent accumulation of knowledge and inputs from various parties. Students' efforts and parents' support are of great significance. To help NCS children learn Chinese better and adapt to and integrate into the Hong Kong society more quickly, parents are cordially invited to join hands with EDB and the schools by giving guidance and encouragement to their children.

Enquiry

Parents seeking further information on the Support Network and Webpage on "Education services for non-Chinese speaking (NCS) students" may contact the Placement and Support Section of EDB.

Telephone No. : 2892 6187

Website: <http://www.edb.gov.hk/ncs>



Enrolling in local ordinary schools

Pleasurable and Effective Chinese Learning

Chinese Language Learning Support

EDB provides recurrent funding and school-based professional support to schools admitting NCS students, as appropriate to schools' circumstances, to facilitate their development of expertise in the learning and teaching of NCS students and sharing of experiences.

Our belief and challenges

We are committed to helping the NCS students to integrate into the school and the society as early as possible. The learning of Chinese and learning through Chinese has been a major concern of parents and schools. Such common concerns include:

- How to develop a long-term plan for the NCS students in learning Chinese?
- How to cope with the difference in the language abilities of the students?
- How to enhance their motivation in learning?
- How to assess the language abilities of the students?

Our support services

- Curriculum planning: we collaborate with teachers to develop a holistic and balanced school-based curriculum by organizing the learning content systematically; and selecting, designing and adapting appropriate learning and teaching materials.

- Teaching strategies: varied and flexible teaching strategies are adopted to help students build a strong language foundation and to scaffold their learning so that they can catch up with the mainstream curriculum.
- Assessment: assessment data are used to provide feedback on learning and teaching with a view to improving students' language abilities.

Examples of support focuses

- Development of the school-based curriculum by year level
- Development of pull-out Chinese language programme
- Effective learning, teaching and assessment strategies in reading, writing, listening, speaking and vocabulary building
- Use of story books
- Strategies to cater for learner diversity
- Teaching of literature and culture





Enrolling in local ordinary schools

Caring school environment

Comprehensive Student Guidance Service for Primary Students



Comprehensive Student Guidance Service has been implemented in primary schools since September 2002. Student guidance services form an integral part of the system of the school, being inseparably linked with other sub-systems within the school, such as student discipline, administration and management as well as learning and teaching. It is only through the intensive cooperation among the sub-systems that the school would be able to effectively implement student guidance services to cater for the healthy development of students.

The Comprehensive Student Guidance Service includes the following four domains:

Policy and Organisation

- To cultivate a positive and caring school culture, according to individual school's characteristics for the whole-person development for all students;

- To establish a school guidance team or a related team in formulating the school guidance policy, planning and coordinating guidance services;
- To promote cross-team collaboration in enhancing the Whole School Approach to student development;
- To set up an internal and external referral system, facilitating early identification, guidance support and referral services whereby students' specific needs are appropriately addressed;
- To support the school in implementing the school policy to foster student attendance;
- To build a mechanism for school self-evaluation through regular and systematic reviews to ensure the effective implementation of the student guidance service.



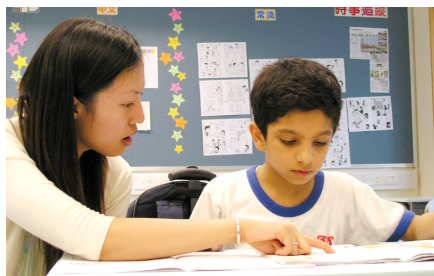


Enrolling in local ordinary schools

Caring school environment

Supportive Service

- To provide teachers with professional training on guidance and counselling related skills so as to enhance their understanding of the students' emotions, behaviours, developmental needs and their skills in communicating with students and parents;
- To enhance team spirit, shared vision, mutual support and communication among the teaching staff for the implementation of guidance service;
- To establish a consultation and supportive mechanism for teachers in handling student problems;
- To promote home-school cooperation and parent education;
- To establish good communication and partnership with community organisations and mobilise them for appropriate support services.



Personal Growth Education (PGE)

- To implement school-based PGE for the developmental needs of all students;
- To develop and maximise students' potentials and to help them build up the basic knowledge, skills and attitude in the four areas of personal, social, academic and career development;
- PGE can be conducted in the forms of classroom learning, short courses, group activities, assemblies, cross-curricular activities, etc;
- To design and develop various progressive learning and guidance sessions / activities to meet the developmental needs of students;
- To enhance students' learning motivation through interactive and cooperative programmes;
- To facilitate students' self-exploration and reflection through experiential learning;
- To help students apply the learning experiences to their daily life.

Responsive Service

- To help students in need through individual and group counseling, and refer those who need further professional support and follow-up for relevant external services;



Enrolling in local ordinary schools

Caring school environment

- To work with the school Student Support Team in providing guidance service to students with special educational needs;
- To provide timely intervention and follow-up services to critical incidents in schools.

School Social Work Service in Secondary Schools

School social work services in the secondary schools are provided by non-government organisations. The services aim at helping students develop their potentials to the fullest, cultivate healthy personalities, establish harmonious interpersonal relationships and elicit their concern for the community.

School social workers actively identify cases and accept case referrals. When providing service, they will assess the nature of problem and help the students manage their personal, family, relationship or learning difficulties. They will help schools establish good relationships with communities and families, coordinate and build community resource network, and run preventive and developmental guidance activities for students.



Enquiry

Students and parents may contact the school guidance personnel in primary schools or the school social workers and guidance teachers in secondary schools for services or enquiry. For enquiries on the general guidance and discipline services supported by EDB, please call 2863 4705.





Enrolling in local ordinary schools

Education services for students with learning difficulties



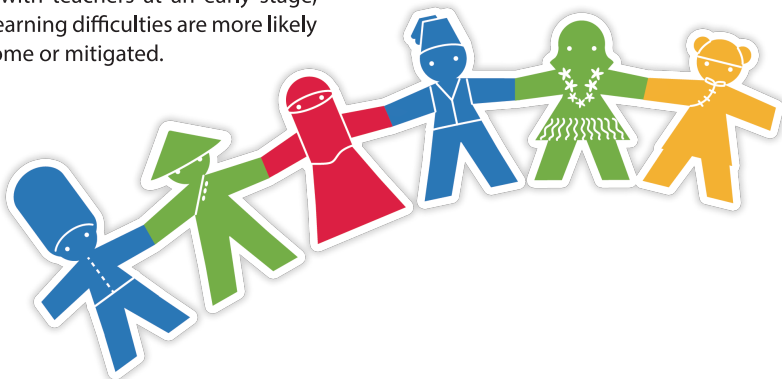
Children entering Primary 1 may show variation in their development that affects their learning and adjustment. To identify and support these children at an early stage, government, aided and Direct Subsidy Scheme schools annually conduct the 'Early Identification and Intervention of Learning Difficulties Programme for Primary One Pupils'.



For those students who seem to experience learning difficulties, teachers will complete an observation checklist for them during early December to early January to identify those with mild and marked learning difficulties. Then appropriate support measures can be arranged as early as possible.



Many of these students show only mild learning difficulties. If parents could collaborate with teachers at an early stage, these mild learning difficulties are more likely to be overcome or mitigated.





Joining Parent-Teacher Association

Walking with Your Children



Families and schools, being co-operative partners in the education for children, should work closely for the education of our next generation.

Parent-Teacher Association (PTA)

Most of the schools in Hong Kong have established their PTAs or parent organisations. Through PTA, parents can work with school to create ideal learning environment for the physical and intellectual development of children.

Through regular meetings, both parents and teachers can exchange ideas and discuss issues concerning school education, thereby making views known to each other to foster mutual understanding.

For enquiries about PTA, please contact school.

Federations of PTAs

The district-based Federations of PTAs are formed by PTAs of schools in administrative districts. These Federations of PTAs organise various activities to meet the needs of the parents in their districts.

At present, each of the all 18 administrative districts in Hong Kong has established its own Federation of PTA.





Joining Parent-Teacher Association

Walking with Your Children

Committee on Home-School Co-operation

The Committee on Home-School Co-operation, which was set up in 1993, promotes and supports schools in taking forward home-school co-operation in Hong Kong.

The Secretariat of the Committee on Home-School Co-operation is happy to answer any enquiries from parents on home-school co-operation. The enquiry number of the Secretariat is 3698 4376.

Parents can find the contact details of PTAs and the Federations of PTAs on the website of the Committee on Home-School Co-operation, at <http://www.chsc.hk/eng/>





Further Study Opportunities for Secondary School Leavers

For progression to higher education, alternative Chinese Language qualifications including General Certificate of Secondary Education (GCSE) (Chinese), International General Certificate of Secondary Education (IGCSE) (Chinese), General Certificate of Education (GCE) AS-Level or GCE A-Level (Chinese) are accepted for consideration, under specified circumstances, by University Grants Committee-funded institutions for application under the Joint University Programmes Admissions System. Eligible school candidates sitting for these examinations are charged an examination fee level on par with the Hong Kong Diploma of Secondary Education (Chinese Language). The Government subsidises the fee difference. Besides, the Examination Fee Remission Scheme has been extended to help eligible needy NCS students by granting them full or half fee remission for the above examinations.

Students are not alone in their pursuit of career goals. Careers guidance teachers and school social workers will help by providing career information to the secondary school graduates. They will also take care of those in need of career guidance.

EDB helps by collecting comprehensive and accurate information on further studies and disseminate the information to teachers and students through the EDB website (www.edb.gov.hk/cgs) and the following ways:

- Issuing publications, including the print and electronic versions of the Careers Guidance Handbook for Secondary School Graduates in which “Message for Non-Chinese Speaking Students” is included to provide them with relevant information on post-secondary studies;
- Setting up hotline and organising information expo on multiple pathways for secondary school leavers during the period of the release of the results of the Hong Kong Diploma of Secondary Education Examination; and
- Setting up a dedicated information counter at the Information Expo on multiple pathways for secondary school leavers every year to cater for the needs of individual NCS students.





Further Study Opportunities for Secondary School Leavers

Students may do their own information search. Relevant information^{3&4} (as at October 2018) is listed below:

Name of organisation	Enquiry	Website
Caritas Community & Higher Education Service	3568 8688	www.cches.edu.hk
Chu Hai College of Higher Education	2972 7200	www.chuhai.edu.hk
City University of Hong Kong	3442 7654	www.cityu.edu.hk
Continuing Education Fund	3142 2277	www.wfsfaa.gov.hk/cef/
EDB Careers Guidance Team	3698 4126	www.edb.gov.hk/lifeplanning
Information Portal for Accredited Post-secondary Programmes	3509 7423	www.ipass.gov.hk
EDB Non-local Higher & Professional Education Courses Homepage	2520 0255/ 2520 0559	www.edb.gov.hk/ncr
Hang Seng Management College	3963 5000	www.hsmc.edu.hk
Hong Kong Art School	2922 2822	www.hkas.edu.hk
Hong Kong Baptist University	3411 7400	www.hkbu.edu.hk
Hong Kong College of Technology	2926 1222	www.hkct.edu.hk
Hong Kong Council for Accreditation of Academic and Vocational Qualifications	3658 0000	www.hkcaavq.edu.hk
Hong Kong Education City - Multiple Pathways		www.hkedcity.net/teencampus/
Hong Kong Examinations and Assessment Authority	3628 8833 (general enquiry)	www.hkeaa.edu.hk
• Hong Kong Diploma of Secondary Education	3628 8860	
• International and Professional Examinations	3628 8787	

³ The above list is not exhaustive.

⁴ The above organisations and webpages are arranged in the alphabetical order of their respective names.



Further Study Opportunities for Secondary School Leavers

Name of organisation	Enquiry	Website
Hong Kong Institute of Technology	2782 2433	www.hkit.edu.hk
Hong Kong Institute of Vocational Education (IVE)	2897 6111	www.ive.edu.hk
Hong Kong Shue Yan University	2570 7110	www.hksyu.edu
International Social Service Hong Kong Branch	2834 6863	www.isshk.org
Lingnan University	2616 8888	www.ln.edu.hk
Office of Joint University Programmes Admissions System (JUPAS)	2334 2929/ 2233 2929	www.jupas.edu.hk
Qualifications Section, Civil Service Bureau	2810 2644	www.csb.gov.hk
Student Financial Assistance Agency (Scholarships, Grants & Loans Schemes)	2802 2345	www.wfsfaa.gov.hk/
The Chinese University of Hong Kong	3943 6000/ 3943 7000	www.cuhk.edu.hk
The Hong Kong Academy for Performing Arts	2584 8500	www.hkapa.edu
The Education University of Hong Kong	2948 8888	https://www.eduhk.hk/main/
The Hong Kong Polytechnic University	2766 5111	www.polyu.edu.hk
The Hong Kong University of Science and Technology	2358 8888	www.ust.hk
The Open University of Hong Kong	2711 2100	www.ouhk.edu.hk
The Prince Philip Dental Hospital	2859 0238	www.ppdh.org.hk
The Samaritans Hong Kong (Multi-Lingual Service)	2896 0000	www.samaritans.org.hk
The University of Hong Kong	2859 2111	www.hku.hk
Tung Wah College	3190 6678	www.twc.edu.hk



Higher and Post-secondary Education

After completing the new senior secondary curriculum, eligible students may further pursue post-secondary programmes at bachelor degree and sub-degree level offered by publicly-funded and self-financing post-secondary institutions. Details are available at the Joint University Programmes Admissions System website (<http://www.jupas.edu.hk>) and Information Portal for Accredited Post-secondary Programmes (<http://www.ipass.gov.hk>).





Vocational Education and Other Study Opportunities

Students who have finished the new senior secondary curriculum may choose the programmes offered by the member institutions of the Vocational Training Council (VTC), namely the Technological and Higher Education Institute of Hong Kong, the Hong Kong Institute of Vocational Education, the Hong Kong Design Institute, the Youth College, the Hospitality Industry Training and Development Centre, the Chinese Cuisine Training Institute, the Maritime Services Training Institute and Pro-Act Training and Development Centres, as well as the vocational training courses provided by Clothing Industry Training Authority, Construction Industry Council and non-government organisations.

In the 2012/13 school year, VTC has set up a new Youth College which provides dedicated support to NCS students and students with special educational needs. VTC provides various vocational training programmes with English as the medium of instruction for NCS students, in which, a project for ethnic minority youths is outlined as follows:

Ethnic Minority Project (EMP)

EMP is a project run by VTC for the growing population of ethnic minority youths in Hong Kong. It aims at providing short-term and full-time bilingual vocational training courses for non-engaged 14-24 years old ethnic minority youths.

The programme will cover three main areas, namely career-oriented training, language enhancement and life skills training so as to facilitate their future career development or further studies.

Upon completion of the course, there will be career guidance and counselling in the following six months for those who are employed to help the trainees consolidate their learning experiences.

The course is free of charge.

Enquiry

Telephone No. : 3519 1842 / 3519 1808

Website: www.yc.edu.hk/vdp





Vocational Education and Other Study Opportunities

Related Organisations:

Joint University Programmes Admissions System (JUPAS) Office

Website: <http://www.jupas.edu.hk>

Enquiry: 2334 2330 (24-Hour Enquiry Hotline)

Information Portal for Accredited Post-secondary Programmes (iPASS)

Website: <http://www.ipass.gov.hk>

Enquiry: 3509 7423

Vocational Training Council

Website: <http://www.vtc.edu.hk>

Enquiry: 2836 1000

Clothing Industry Training Authority

Website: <http://www.clothingtraining.org.hk>

Enquiry: 2263 6300

Construction Industry Council

Website: <http://www.hkcic.org>

Enquiry: 2100 9000

Related Programmes:

“Youth Pre-employment Training Programme” & “Youth Work Experience and Training Scheme”

Website: <http://www.yes.labour.gov.hk/y pyt/home.aspx>

Enquiry: 2112 9932





New Academic Structure



The New Academic Structure (NAS) has been implemented at Secondary 4 since September 2009, under which all students have the opportunity to receive three years of junior secondary and three years of senior secondary education.

Benefits of Implementing the New Academic Structure

The NAS is introduced to better equip students to meet the challenges of the 21st Century through a broad and balanced curriculum that promotes students' whole-person development and develops their life-long learning abilities.

The New Senior Secondary (NSS) curriculum is more coherent and offers greater diversity and choice to suit the different needs, interests and abilities of students, which also

facilitates experience of interdisciplinary studies to promote their learning to learn capabilities. The new curriculum enables all students to achieve enhanced (Chinese and English) language and mathematical abilities, a broadened knowledge base and increased competence in critical thinking, independent learning and interpersonal communication. Students will also be provided with more opportunities to be involved in Other Learning Experiences, including Moral and Civic Education, Community Service, Career-related Experiences, Aesthetic Development and Physical Development, which better prepare them for further studies and career.

The NAS has greatly enhanced the articulation of our system with worldwide education systems, opening up smoother multiple pathways for students.



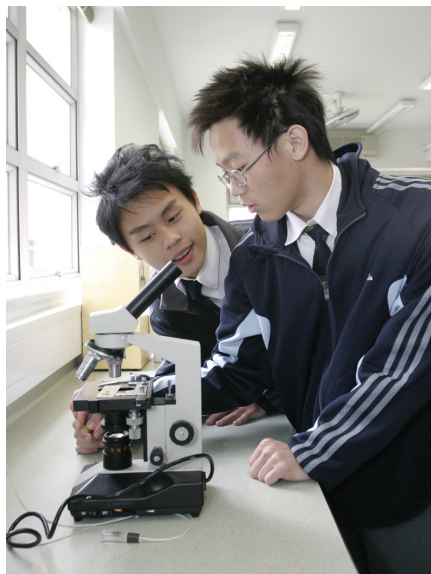


New Academic Structure

Opportunity to Study Other Languages

For language subjects, Chinese Language and English Language are core subjects in the NSS curriculum. NCS students should also study Chinese Language to ensure that they can integrate themselves into the life of Hong Kong. They can take the NSS Chinese Language or some other overseas Chinese curriculum with examinations administered by the Hong Kong Examinations and Assessment Authority.

As Hong Kong is a cosmopolitan city, students are also provided with opportunities to study languages other than Chinese and English. Schools can provide access for students to study other languages by offering other language subjects (including French, German, Hindi, Japanese, Spanish and Urdu) using the Diversity Learning Grant provided by EDB.





Senior Secondary Applied Learning

Applied Learning (ApL) is an integral part of the New Senior Secondary (NSS) curriculum. It is introduced to Secondary 5 and 6 to cater for the diverse learning needs of students.

ApL complements senior secondary subjects by offering studies with stronger elements of practical learning linked to broad professional and vocational fields. With equal emphasis on the development of knowledge, skills and attitudes, ApL aims at enabling students to understand fundamental theories and concepts through application and practice, and to develop their generic skills in authentic context.

Under the NSS curriculum, Secondary 5 and 6 students may choose ApL course(s) as elective subject(s) according to their interest, aspirations and aptitudes. There are six areas of studies in ApL, namely (1) Creative Studies; (2) Media and Communication; (3) Business, Management and Law; (4) Services; (5) Applied Science; and (6) Engineering and Production. Students will be prepared for further studies and/or work as well as lifelong learning through the development of foundation skills, thinking skills, people skills, values and attitudes, and career-related competencies.

To cater for students' diverse learning needs, some ApL courses will be offered in English subject to demand in each cohort. Information of ApL courses is available at the EDB website (www.edb.gov.hk/en/curriculum-development/cross-kl-a-studies/applied-learning/index-1.html) and downloadable from mobile applications for iPhone, iPad and Android versions [To download the ApL App, just search for "Prospectus for ApL" on the iPhone App Store or Android Market (Play Store)].





Finding School Information

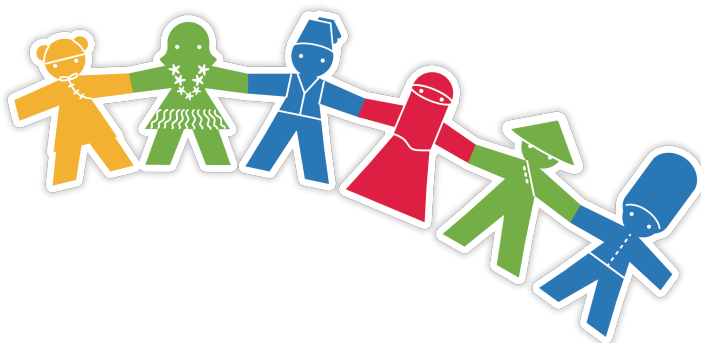
Parents can obtain information of various types of schools from the following channels:

“School Profile”, from the website of the Committee on Home-School Cooperation, at <http://www.chsc.hk/eng/>

- “Profile of Kindergartens and Kindergarten-cum-Child Care Centres” - listing various basic information of registered kindergartens / kindergarten-cum-child care centres, including name of the school, school registration number, address, telephone number, qualifications of teachers and approved school fees, etc.
- “Primary School Profile” - providing basic information on most primary schools in Hong Kong (except international schools and special schools), including features of schools, their facilities, class structures, extra-curricular activities, Primary One Admission (POA) System and an overview of the POA school nets.
- “Secondary School Profile” - providing basic information on most secondary schools in Hong Kong (except international schools and special schools), including the features of schools, their facilities, class structures, extra-curricular activities, tuition fees and other fees, etc.

Webpage on “Education services for non-Chinese speaking (NCS) students”, at <http://www.edb.gov.hk/ncs/>, with the following information available for parents’ reference:

- Information leaflets, e.g. “Brief on Education Support Measures for Non-Chinese Speaking (NCS) Students”, and information leaflets which are written in some ethnic minority languages.
- School lists [--> Useful school lists], e.g. “International Education in Hong Kong - A Prospectus”, List of schools provided with school-based support programmes specifically arranged for non-Chinese speaking students, List of kindergartens / kindergarten-cum-child care centres adopting a non-local curriculum, School Lists (By District), List of “Through-train” Schools, and List of Direct Subsidy Scheme Schools, List of Schools Offering Full-time Initiation Programme for Newly Arrived Children including non-Chinese speaking students, and List of Centres Operating “Induction Programme” for Newly Arrived Children including non-Chinese speaking students, etc.





Finding School Information

Other channels:

EDB's Regional Education Offices: Copies of the District school lists, "Profile of Kindergartens and Kindergarten-cum-Child Care Centres", "Primary School Profile", and "Secondary School Profile" are displayed there for reference. The enquiry numbers and addresses of these offices are listed at page 14.

Major public libraries: Copies of "Primary School Profile" and "Secondary School Profile" are displayed there for reference.

Enquiry: 2921 0208

Website: www.hkpl.gov.hk/en/locations/opening-hours.html

Home Affairs Department's Public Enquiry Service Centres: Copies of "Primary School Profile" and "Secondary School Profile" are displayed there for reference.

Enquiry: 2835 2500

Website: http://www.had.gov.hk/en/public_services/public_enquiry_services/ctec.htm



All the Maternal and Child Health Centres of the Department of Health and the Integrated Family Service Centres of the Social Welfare Department: Copies of "Profile of Kindergartens and Kindergarten-cum-Child Care Centres" are displayed there for reference.

Maternal and Child Health Centres, Department of Health:

Enquiry: 2112 9900

Website: http://www.fhs.gov.hk/english/centre_det/maternal/maternal.html



Integrated Family Service Centres, Social Welfare Department:

Enquiry: 2343 2255

Website: www.swd.gov.hk/en/index/site_pubsvc/page_family/sub_listofserv/id_ifs/



Individual schools' websites⁵

⁵ Parents can find the websites of individual schools from the District School Lists (<http://www.edb.gov.hk/en/student-parents/sch-info/sch-search/index.html>) and the website of the Committee on Home-School Co-operation (<http://www.chsc.hk/>).

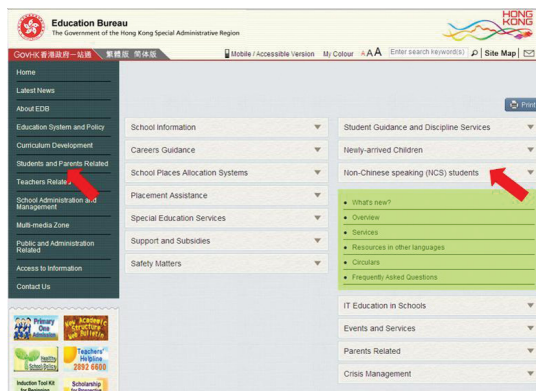


Webpage for “Education services for non-Chinese speaking (NCS) students”

User Guide

Press <http://www.edb.gov.hk/ncs> OR

1. Enter the website of EDB (<http://www.edb.gov.hk>)
2. Choose the language to enter the homepage
3. Choose “Students and Parents Related” > “Non-Chinese speaking (NCS) students”



Outline of the webpage

EDB is committed to assisting all NCS students in adapting to the local education system and integrating into the community as early as possible.

Some NCS students encounter learning difficulties and adjustment problems when they study in local schools. Greater care and help from schools, teachers and parents are required so that these students can adapt to the local education system and integrate into the community quickly. EDB has provided various support services to school administrators, teachers and parents to cater for the common learning and adaptation

needs of the NCS students. This information platform provides an electronic channel through which school administrators, teachers, parents and the public caring about the education of NCS students can obtain useful information and related resources more quickly and directly. The following information and resources are provided:

- Acceptance of Alternative Qualification(s) in Chinese Language for Joint University Programmes Admissions System - Under the New Academic Structure, all University Grants Committee-funded institutions will continue to accept alternative Chinese qualifications including results of the GCSE (Chinese), IGCSE (Chinese), GCE AS-Level or



Webpage for “Education services for non-Chinese speaking (NCS) students”

A-Level (Chinese) for students who have met the specified circumstances.

● Provision and Support

- For schools – various kinds of support services provided for schools to assist NCS students in learning and development, and various types of services provided for NCS students.
- For teachers – various kinds of support services provided for teachers so that they will be able to provide appropriate assistance to NCS students.
- For parents and students – support services provided for NCS parents and students include provision of information on education services, Primary One Admission System, Secondary School Places Allocation System, career guidance, and services provided outside EDB.
- Special series in provision and support for schools and teachers consisting of PowerPoint presentation slides, video clips of sharing sessions and exemplars of good learning and teaching practices, etc.

● Education services provided by EDB addressing NCS students’ needs; and

● Related websites, frequently asked questions and latest information about various education services.

A list of items is provided under Topics of Concern where NCS parents can find useful information, such as names of non-government organisations serving NCS communities and their services, list of kindergartens / kindergarten-cum-child care centres adopting a non-local curriculum, list of schools provided with school-based support programmes specifically arranged for non-Chinese speaking students, and information leaflets on new education initiatives which are written in English and some ethnic minority languages, etc. You are most welcome to visit this webpage.





Summary of Enquiry Numbers

Education / Support Service	Organisation	Enquiry
Placement assistance and basic information about Initiation Programme and Induction Programme	Regional Education Office, EDB	
	Hong Kong	2863 4646
	Kowloon	3698 4108
	New Territories East	2639 4876
	New Territories West	2437 7272
Detailed information about Initiation Programme Detailed information about Induction Programme	Newly Arrived Children Support Unit, EDB	2892 6189
Summer Bridging Programme for non-Chinese Speaking Students		2892 6190
Chinese Language Learning Support Centre		
Primary One Admission System Secondary School Places Allocation System	School Places Allocation Section, EDB	2832 7700 2832 7740
Hong Kong Diploma of Secondary Education Examination	Hong Kong Examinations and Assessment Authority Southorn Centre, Wanchai Office	3628 8860
Support Network and Webpage on "Education services for non-Chinese speaking (NCS) students"	Placement and Support Section, EDB	2892 6187
Student Guidance and Discipline Services	Guidance and Discipline Section, EDB	2892 4705
School-based Gifted Development Programmes Support Measures for Exceptionally Gifted Students Scheme	Gifted Education Section, EDB	3698 3472
Special Education Services	Special Education Services General Office, EDB	3698 3957



Summary of Enquiry Numbers

Education / Support Service	Organisation	Enquiry
Assessment services for children under 12 years of age with developmental problems	Child Assessment Centre, Department of Health	
	Fanling Child Assessment Centre	2639 1402
	Pamela Youde Child Assessment Centre (Shatin)	2210 1600
	Tuen Mun Child Assessment Centre	2468 5261
	Ha Kwai Chung Child Assessment Centre	2370 1887
	Central Kowloon Child Assessment Centre	2246 6633
	Pamela Youde Child Assessment Centre (Kwun Tong)	2727 8474
Application for Kindergarten and Child Care Centre Fee Remission Scheme	Student Finance Office	2802 2345
Application for School Textbook Assistance Scheme		2802 2345
Application for Student Travel Subsidy Scheme		
Application for Subsidy Scheme for Internet Access Charges		
Application for Examination Fee Remission Scheme		
Home-School Co-operation	The Secretariat, Committee on Home-School Co-operation	3698 4376
24-hour Automatic Telephone Enquiry System	EDB	2891 0088
Hotline for Non-Chinese Speaking Students and Parents	EDB	3540 7447



Summary of Enquiry Numbers

Education / Support Service	Organisation	Enquiry
Other education opportunities for students completing Secondary 3 or Secondary 6:		
Vocational education and training	Vocational Training Council	2836 1000
	Clothing Industry Training Authority	2263 6300
	Construction Industry Council	2100 9000
Ethnic Minority Project	Vocational Training Council	5244 5662
		3519 1842
		3519 1808
Youth Pre-Employment Training Programme and Youth Work Experience and Training Scheme	Labour Department	2112 9932





Education Bureau



All rights reserved. Interested parties may use the text and videos of the Pack for educational and non-profit-making purpose on the condition that the source is acknowledged.

Education Bureau
(C) 2018

Printed by the Government Logistics Department